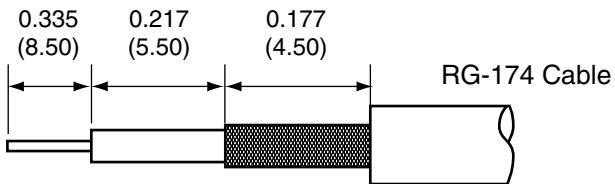
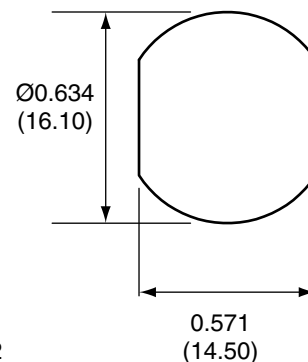


1		
Description	Material	Finish
Nut	Brass	Nickel
Washer	Brass	Nickel
Body	Brass	Nickel
Socket	Brass	Gold
Crimp Ring	Brass	Nickel
Insulation	Teflon	N/A
O Ring	SI Rubber	N/A

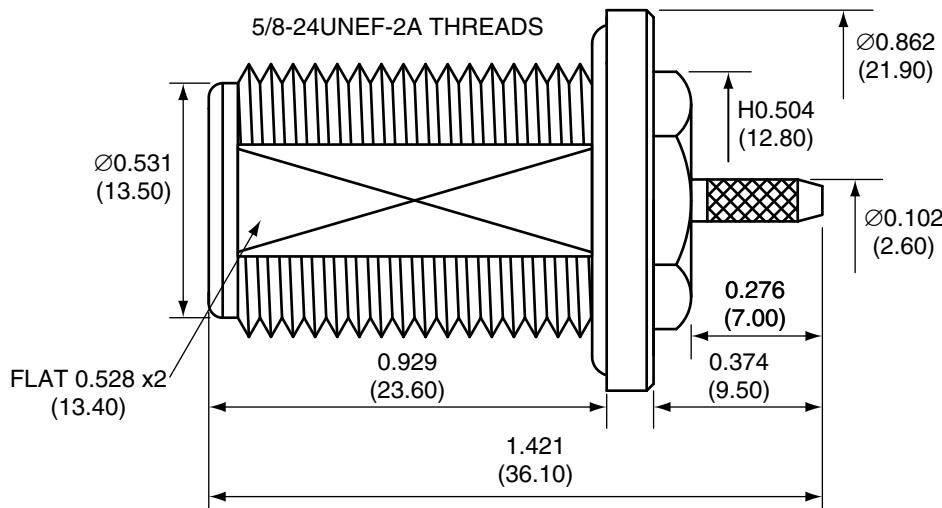
RECOMMENDED CABLE STRIPPING DIMENSIONS



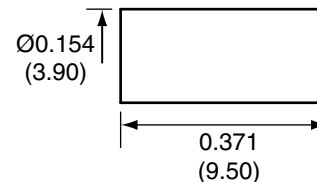
RECOMMENDED MOUNTING HOLE



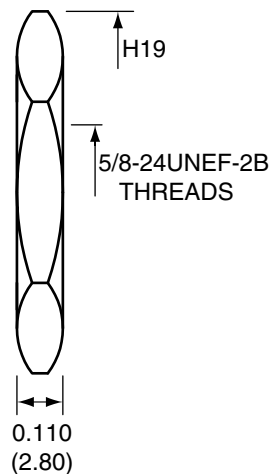
SIDE VIEW



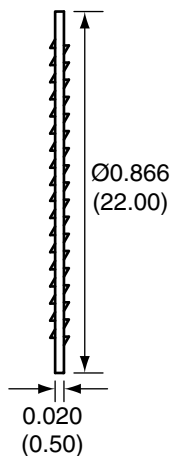
CRIMP RING



NUT



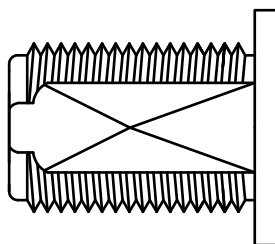
WASHER



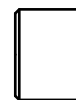
CONN005 ASSEMBLY INSTRUCTIONS

1. Insert the cable center conductor and insulation into the base
2. Solder the socket to the center conductor.
3. Wrap the braid around the tail of the body and crimp the ring with a hex crimp tool.
4. Put the socket through the insulator.
5. Screw the base into the top.

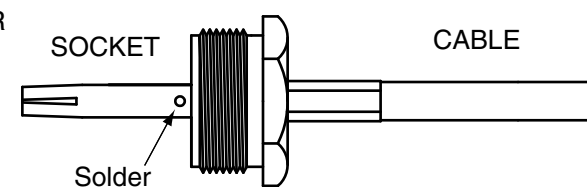
TOP



INSULATOR



BASE



Title N FEMALE BULKHEAD MOUNT
CABLE END CRIMP FOR RG174 CABLE

Part No. CONN005

Revision: 1.0

Dimensions: INCHES (mm)

Date: 2/11/2008

CONNECTOR CITY
159 ORT LANE
MERLIN, OR 97532
PH (541)-471-6256
FAX (541)-471-6251

Sheet 1 of 1

CONNECTOR CITY
THE VALUE OF CONNECTIONS